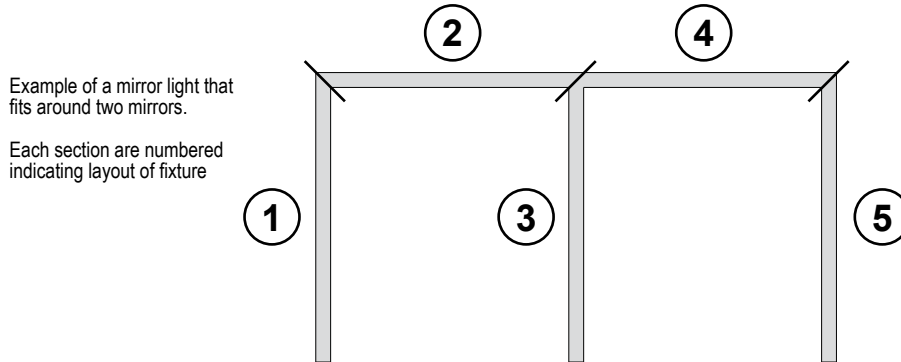


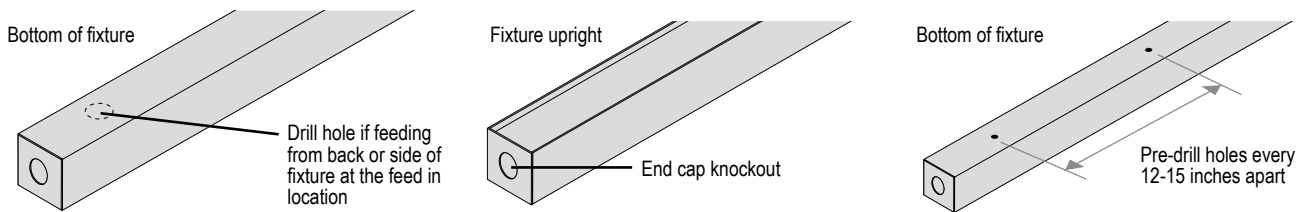
Installation Instructions

The following instructions are general guidelines. Installation should be performed by a qualified electrician in accordance with the National Electrical Code and any applicable local codes. This product runs on 120 volts and may cause serious injuries from electrical shock. Disconnect power to the fixture before installation and leave power disconnected until installation is complete. Read through the entire instructions before beginning installation. Contact Celestial Lighting for further assistance.

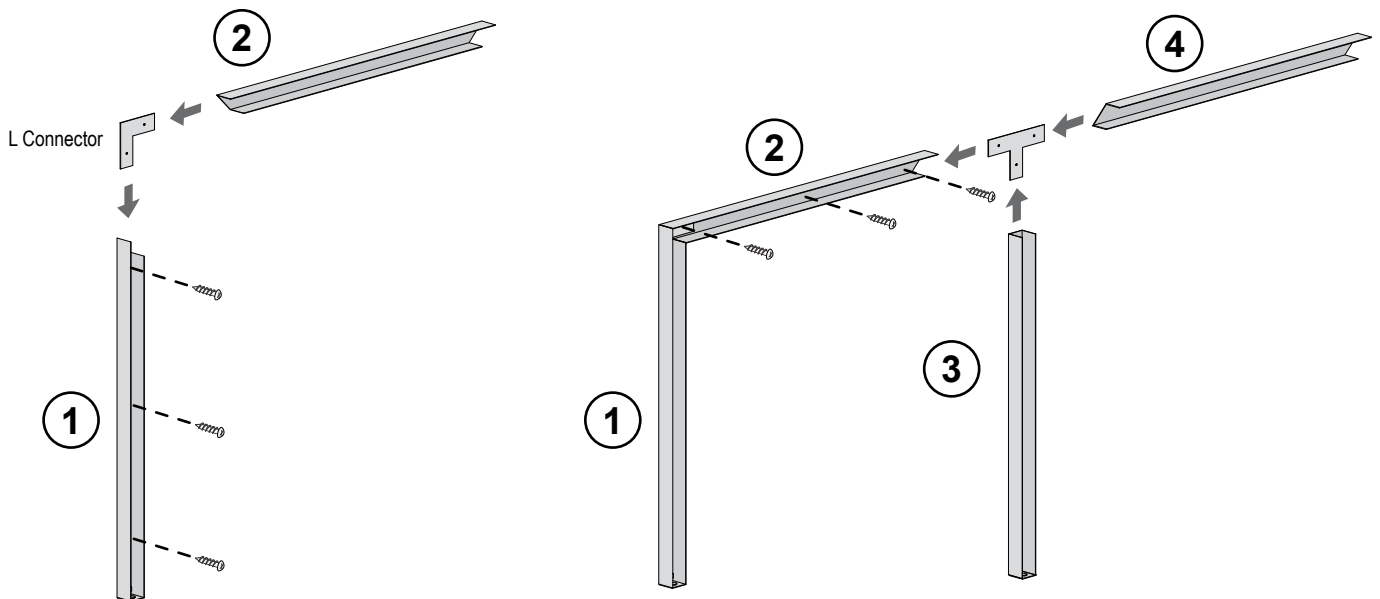
Step 1 Aquarius R series LED Mirror Light ships in premade sections labeled by numbers in ascending order. The numbers are labeled on each fixture bag as well as inside each base and cover indicating the beginning and end of run. Start installation by the first fixture labeled no.1 and continue until all fixtures have been installed. A drawing of the fixture is provided to show how all sections are assembled.



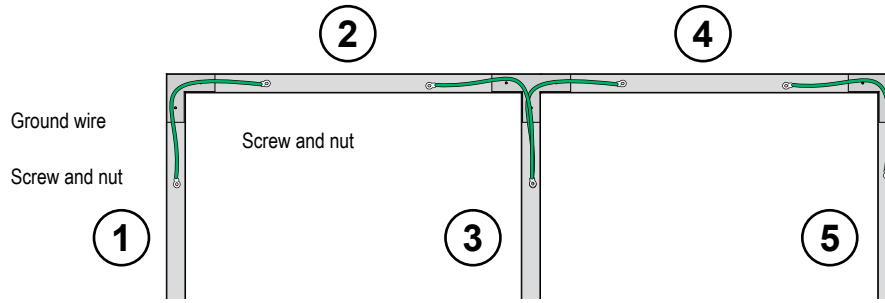
Step 2 Typically the power is fed through the back of the fixture to hide any wires and conduit. Using the drawing provided, note the feed location and fixture number and drill hole through the back of fixture where the feed will be located. The fixture can also be fed through the ends which will have 7/8 inch knock out attached. (fixture 1, 3 and 5 using example above) Remove cover and pre-drill holes every 12-15 inches apart for all of the base fixtures.



Step 3 Mount base no.1 with appropriate screws to secure surface. Slide L connector into the bottom of base no. 1 and secure with screw. Slide base no. 2 into the L connector and mount with screws. Slide T connector into the bottom of base no. 2 and secure with screw. Slide base 3 and 4 into T connector and secure with screw to surface and continue until all of the base fixtures have been installed.



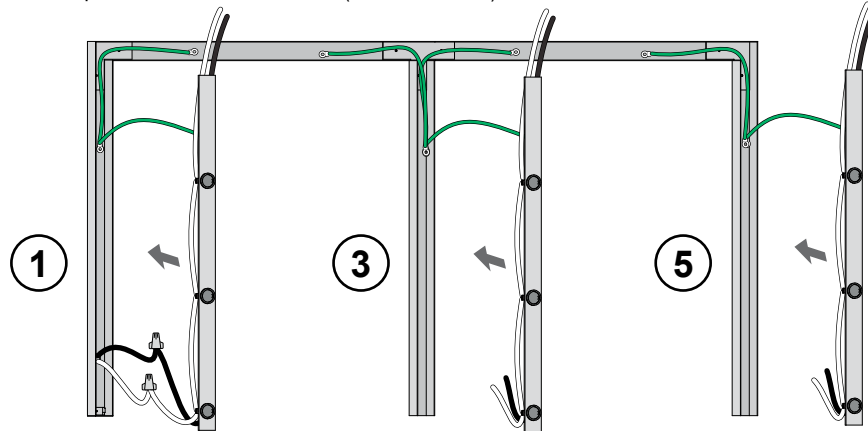
Step 4 Each base comes with green ground wire installed to the bottom of the fixture using screw and nut. Attach base no. 1 ground wire to base no 2. and continue until all of the ground wires are attached to each other.



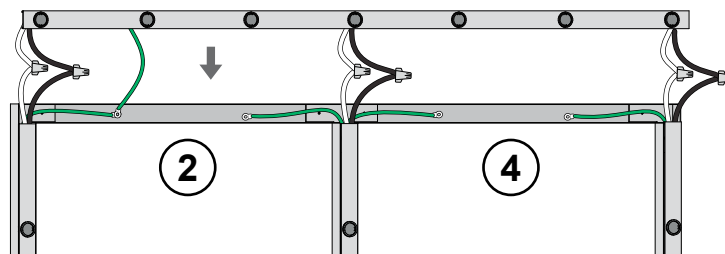
Step 5 Attach the green ground wire on cover no. 1 to base no. 1. Use the same screw and nut that was used to attach the ground wires from base to base. Each screw and nut on the base accommodates 2 sets of ground connection.

If base no. 1 is where the fixture is being fed, wire feed into the black and white cables on the cover from the most bottom area. Make sure to leave the black and white wires on the top outside of the fixture.

Snap in cover into base.
Continue with the same steps on all of the vertical runs (section 3 and 5).



Step 6 The top horizontal cover will be shipped in one piece if it is shorter than 8 feet section. Make ground connection from cover to base and wire all of the black and white wires from vertical sections (1, 3 and 5) to the cover.



Step 7 Mount lamp guards onto fixture with screws.
Screw in LED lamps into fixture.

