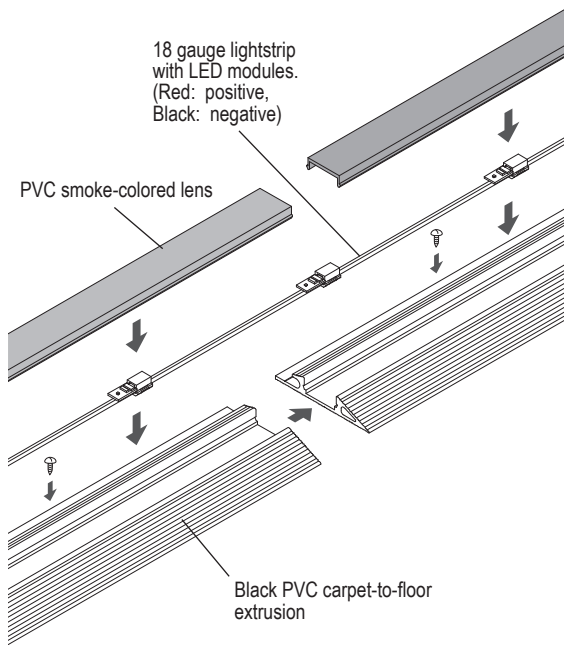
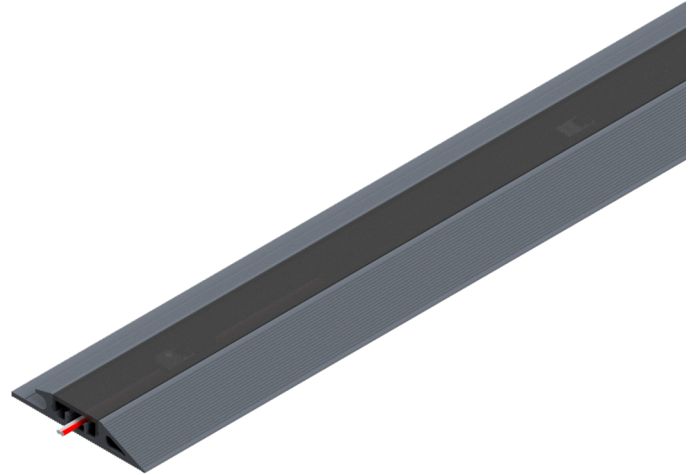
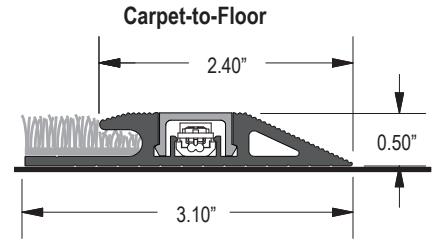


GEMINI 1900 Path Light

- Serves as illuminated guide along carpeted pathways bordered by bare floor
- Provides seamless transition from carpet to floor
- Low profile is ADA compliant (no trip hazard)
- Brightness set at optimum level for darkened areas, creating no glare
- Available in amber, blue, green, red and white LED modules. Standard 6" and 12" spacing (Consult factory for custom spacing)
- LEDs consume only 0.22W each and run on safe 12V DC power
- LEDs are rated for up to 100,000 hours
- Durable PVC track and lens withstand extreme loads and heavy foot traffic
- Fixture design resists spillage and tampering
- Listed as low voltage lighting system; conforms to UL Standard 2108
- Standard 2 year warranty; extended warranty available with approved installers



Use with Celestial 12VDC transformer. (See Power Supply specifications) Warranty void if used with other power supplies.

How to Specify GEMINI 1900 Series

GEM - 1900 -	S	-		-		
	Lens type		Color (Rated Life)		LED Spacing	
	S	Smoke	A	Amber (100,000 hrs)	6	6" on center
			B	Blue (30,000 hrs)	12	12" on center
			G	Green (30,000 hrs)	Consult factory for custom spacings	
			R	Red (100,000 hrs)		
			W	White (30,000 hrs)		
Example	S	-	A	-	12	

Replacement LEDs

- GEM-CL-A (amber)
- GEM-CL-B (blue)
- GEM-CL-G (green)
- GEM-CL-R (red)
- GEM-CL-W (white)

Power Supplies

Ratings

- Input: 120VAC or 277VAC, 50/60 Hz, 1.7A
- Output: 12VDC
- Output current: 60W per output circuit
- Maximum output power: 210 LEDs modules per output circuit
- Constant Voltage
- Overload protection: Auto Resettable
- Enclosure: NEMA/EEMAC Type 1 with conduit knockouts on all four sides of enclosure
- Operating temperature: -25° to 63° Celsius
- Certification: Class 2 Power Supply

Maximum Load

- Maximum 210 LED modules per output circuit
- Do not connect more than 210 LED modules per output circuit

Dimming (GEM-4D)

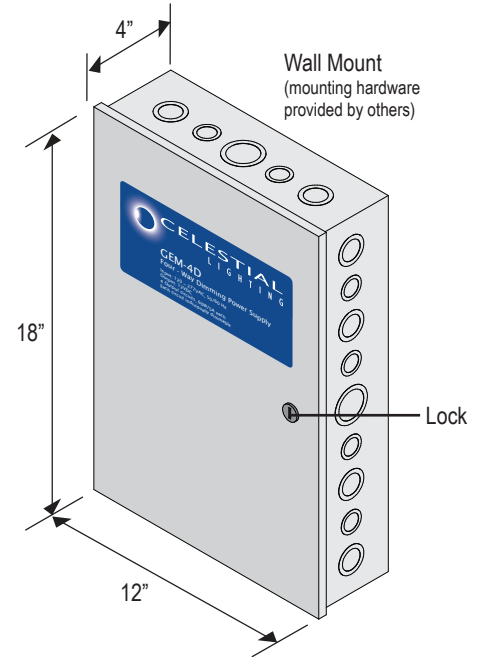
- Four circuit dimming system
- Requires minimum 50 LED modules per output circuit for effective dimming

Non-Dimming (GEM-4N)

- Four circuit system

Ordering Codes

Item Number	Input Current	Outputs	Dimensions	Weight
GEM-4D	120VAC ~ 277V AC, 50/60Hz, 1.7A	240W (60 X 4)	18" H x 12" W x 4" D	19 lbs
GEM-4N	120VAC ~ 277V AC, 50/60Hz, 1.7A	240W (60 X 4)	18" H x 12" W x 4" D	19 lbs



Must be mounted in an accessible location with sufficient ventilation and must not be submerged.

How to Feed GEMINI 1900 (Maximum 210 LEDs per 60W/5A output)

GEMINI 1900 lightstrip uses 18 gauge red/black cable for 12VDC. (Polarity: Red - positive, Black - negative)

To avoid the effects of voltage drop, use at least 14 gauge wire from power supply to each lightstrip. Power supply must be within 75 feet of the start of each lightstrip.

