

**STRINGLITE**

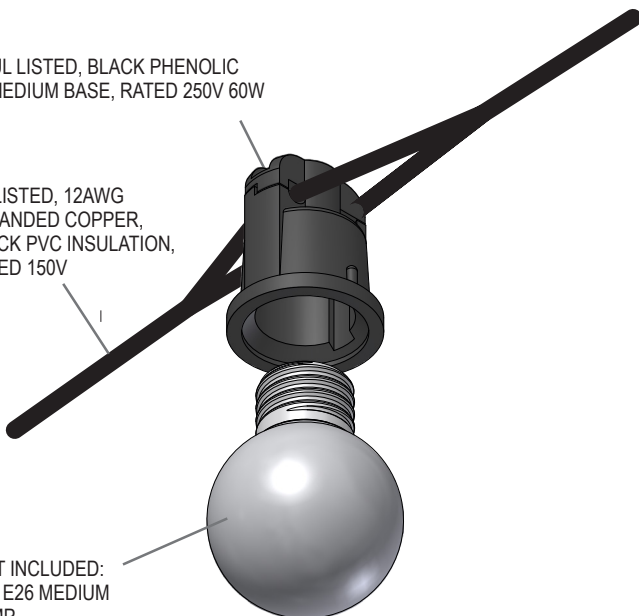
**Features**

- Ideal for decorative lighting above patios, walkways and plazas
- For 120V medium-base lamps (Not included)
- Standard 12", 18" or 24" lamp spacing (Consult factory for custom spacing)
- ETL Listed for wet location
- Maximum 60 watts per lamp.
- Maximum 1440 watts per circuit
- Intended for lamp-down applications only

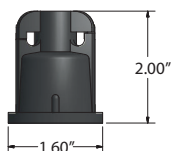
SOCKET: UL LISTED, BLACK PHENOLIC MEDIUM BASE, RATED 250V 60W

WIRE: UL LISTED, 12AWG STRANDED COPPER, BLACK PVC INSULATION, RATED 150V

LAMP NOT INCLUDED: USE 120V E26 MEDIUM BASE LAMP



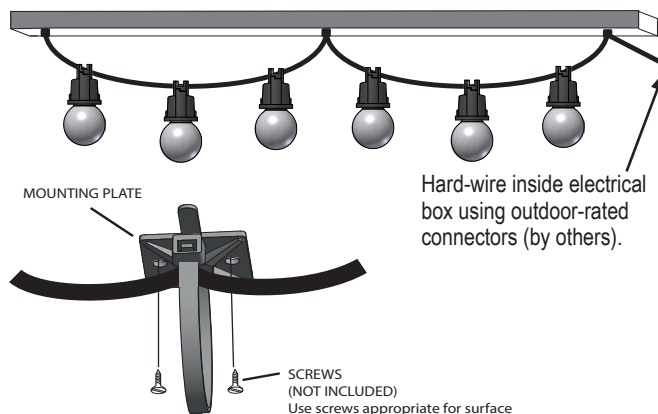
**SOCKET DETAIL**



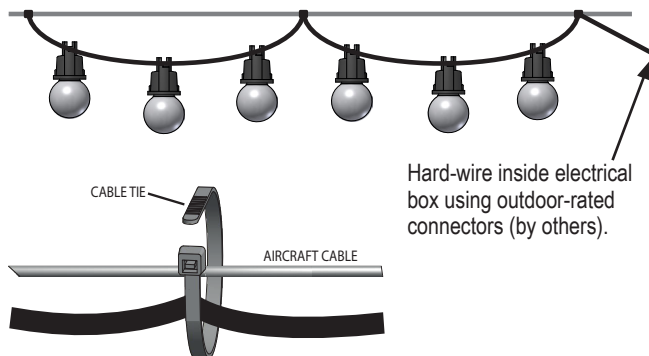
**How to Specify STRINGLITE**

STL -		
	Socket Spacing	
	12	12" on center
	18	18" on center
	24	24" on center
<b>Example</b>	Consult factory for custom spacing	
<b>STL -</b>	<b>24</b>	

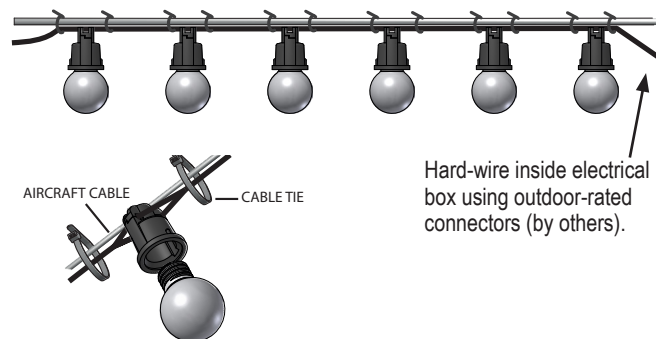
Stringlite shown mounted with drop, to flat secure surface such as beam or truss. Specify mounting plates with cable ties. Fasten at least every 6 feet.



Stringlite shown mounted with drop, to aircraft cable (by others). Ensure that aircraft cable is taut and secured. Specify cable ties. Use at least one cable tie every 6 feet.

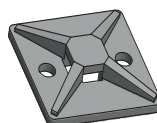


Stringlite shown mounted with no drop, to aircraft cable (by others). Ensure that aircraft cable is taut and secured. Specify cables ties. Use two cable ties per socket; one on each side.



**Mounting Plate with Cable Tie**  
(STL-MC)

Order at least one set per 6ft of Stringlite when mounting to flat surface.



**Cable Ties**  
(STL-CT)

Order at least one per 6ft of Stringlite if mounting with drop to aircraft cable. Order at least two per socket if mounting with no drop to aircraft cable.

